



**Next Meeting**

**September 9th @ 10 AM  
St. Matthias Church**

**AUGUST 2009**

**2009-10 Officers**

**President**  
Karen O'Connell - 655-9018  
**Vice President**  
Kathy Jerzewski - 675-0704  
**Secretary**  
Janice Carter—992-9436  
**Treasurer**  
Linda Frick - 674-1044

**September Hostesses**

Patti Baehre  
Carol Clothier  
Mary Lou Corelli  
Agnes Gates  
Kathy Jerzewski  
Elaine McClory  
Dottie Potter  
Margaret Shelansky  
JoAnne Tighe  
Diane Young



**Hostesses**

Mary Walczak 652-3845  
Mary Ann Lohmann 655-9993

If you cannot serve as hostess this month, please find a replacement.

**October Hostesses**

Raffie Allen-Hofheins  
Dee Braciak  
Cheryl Delventhal  
Margaret Franklin  
Sally Fueller  
Sylvia Jakubiak  
Dorothy Kotarski  
Carol Radomski  
Mary Shea  
Letha Smith

September's program will be by the Stencil Company.

Thank you Mary Ann Lohmann for becoming our much needed Program Chairman. Please let Mary Ann know if you have any ideas for programs.

Our Guild has space for new members so if you know of someone who is interested please tell them.

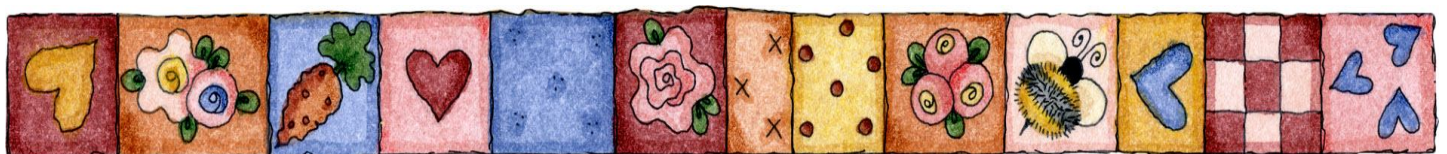
Secret Pals will begin this month and run until May. Terry Kumro thanked those interested for turning in their reservations. A discussion was had on what was involved.

Workshops — September 16<sup>th</sup> — Pat Mazzarella will be teaching Composition. October 21<sup>st</sup> — Jackie Cholewinski will be doing Ricky Tims' Harmonic Convergence. Workshops are at St. Matthias - be ready to start at 9:30 a.m.

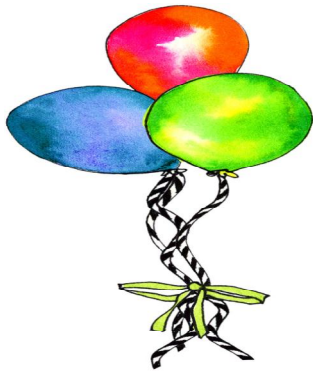
Block of the Month projects will be displayed this month. The new BOM will begin in the next newsletter.

Charity Quilts — the next project involves teenage mothers and their babies — "I Spy" quilts for the kids with novelty fabric. Please bring in any fabric you have to donate.

Ways and Means was won by Barb Augustine.



# Happy Birthday



## September Birthdays

Susan Kruschke	9/1
Pat Miodonski	9/6
Orma Welker	9/12
Jody Dowdall	9/15
Cathy Schueler	9/20

## October Birthdays

Ginny Krebs	10/1
Shirley Loveless	10/3
Terry Doyle	10/4
Debbie Fugle	10/8
Dee Braciak	10/13
Vivian Pikett	10/15
Danielle North	10/17
Barbara Augustine	10/18
Joan Barsalou	10/20
Mary Lou Corelli	10/22
Peg Foley	10/25
Lelia Kearney	10/25
Letha Smith	10/25
Irene Benbenek	10/30

## CHARITY QUILTS—Anne Wasmund

Just a reminder...we would like to wrap up the Erie County Home donation so if you could bring them completed to the next meeting, it would be appreciated.

Our next project involves teenage mothers and their babies. We will be making some "I Spy" quilts for the kids, so if you have an novelty fabric to donate, it would be great.

Here is the pattern for the REUSABLE GROCERY TOTE for FISH of East Aurora. For durability, please remember to use heavier fabrics for this project.

Thanks to all of you for your constant support. Anne

## REUSABLE GROCERY TOTE

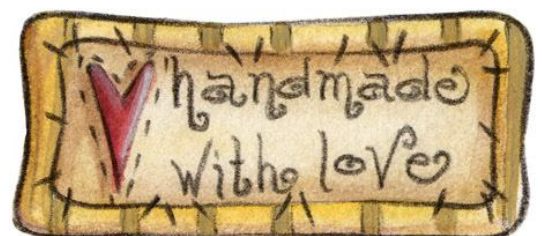
- 2 PIECES - 13-<sup>1</sup>/<sub>2</sub> x 15-<sup>1</sup>/<sub>2</sub> - FRONT AND BACK
- 2 PIECES - 46 X 6 - STRAPS
- 1 PIECE - 44-<sup>1</sup>/<sub>2</sub> x 9-<sup>1</sup>/<sub>2</sub> SIDES/ BOTTOM
- BOTTOM INSERT

Fold straps bias-tape style and press. Pin one strap to front placing it 2 inches from each edge so it forms a loop across the front. Do the same with back piece. Stitch straps at bottom to secure.

Using <sup>1</sup>/<sub>2</sub> inch seams, join long side/bottom piece to front carefully turning at corners. Next, attach back piece in the same manner.

Measure bag to height of 12-<sup>1</sup>/<sub>2</sub> in. Fold over remaining fabric at top of bag to form band. Finish edge with zigzag, pink or <sup>1</sup>/<sub>4</sub>-in fold. Topstitch both fold and band edge. Then topstitch straps in place. Be sure to reinforce straps and four corners at bottom. Place insert in bottom.

Southtowns Piece Makers are having their October 2009 quilt show at Crossroads Christian Church. Chris Barsottelli and Jackie Cholewinski have tickets for the quilt to be auctioned there.





**Upcoming Quilt Shows:**

**10/2-3/09 A Symphony of Stitches  
Southtowns Piecemakers  
Quilt Guild**

**Crossroads Christian Church  
1050 Girdle Road (corner Jamison)**



**Sunshine**

**Elaine McClory 652-7681  
emccclory@roadrunner.com**

**Sally Fueller had surgery. Elaine McClory's father passed away on August 26, 2009.**

**If you know of a member going through difficult circumstances; illness or death in the family, please let Elaine know.**

**Ways n' Means**

**Mary Hagen and Terry Doyle**

**\$1/5 Chances at the Meeting**

**This month's winner was  
Barb Augustine**

**Workshops – Irene Benbenek**

**Sept. 16<sup>th</sup> — Pat Mazzarella —  
Composition. Please be ready to  
start at 9:30 a.m. Supply lists  
were handed out at registration.**

**CURRENT BLOCK OF THE  
MONTH ASSEMBLY OF  
MYSTERY QUILT**

**Secret Pals — Terry Kumro**

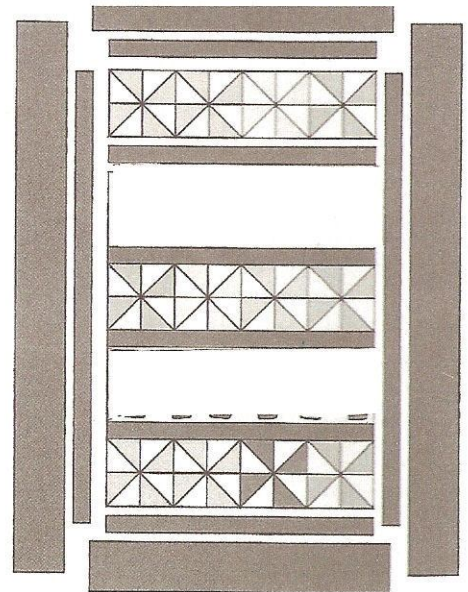
**Secret Pals will begin this  
month and run until May.**



**Library- Mary Lou Corelli and  
Patti Baehre**

**Education – Marge Friend**

**Round Robin – Virginia Davey**



Quilt Top Assembly Diagram

**Huggie Quilts – Nancy Jozwiak**



[The World Wide Web of Quilting and More](#)

Quilt Terms and Tips, etc.

<http://www.victorianaquiltdesigns.com/VictorianaQuilters/Library/Library.htm>

Preventive Machine Maintenance

<http://www.taunton.com/threads/pages/t00022.asp>

A website for a slightly different way to look at quilting measuring and layouts:

<http://www.waukinvnetcorp.com/myquiltgenie/index.php>

Paula Nadelstern Kaleidoscope quilts [http://www.thequiltshow.com/os/blog.php/blog\\_id/2050](http://www.thequiltshow.com/os/blog.php/blog_id/2050)

Place mat designs for Halloween: <http://www.fatcatpatterns.com/halloween.htm>

"Baltimore" type block of the months:

"Chocolate Stars" [http://www.fatcatpatterns.com/chocolate\\_stars.htm](http://www.fatcatpatterns.com/chocolate_stars.htm)

Appliqué - a new Block of the Month with a masculine feel to it is also available:

[http://www.fatcatpatterns.com/southern\\_gentleman.htm](http://www.fatcatpatterns.com/southern_gentleman.htm)

Pat Miodonski has been a great help in suggesting some websites for both recipes and quilting:

<http://www.tasteofhome.com/Recipes>

[http://americanfood.about.com/od/desserts/r/Peach\\_Tart](http://americanfood.about.com/od/desserts/r/Peach_Tart)

<http://www.tasteofhome.com/Recipes>

<http://www.kraftfoods.com>



**N e w s l e t t e r**

Donna Forhecz  
484 Tannery Road  
West Falls NY 14170  
652-7369

E-mail: [forhecz@att.net](mailto:forhecz@att.net)

Newsletter submissions will be due by the 2<sup>nd</sup>  
Friday after the next meeting,  
September 18, 2009

The minutes of the meeting and a copy of the  
Newsletter will be posted on the Guild Web Site:

<http://www.morningstarguild.net>

Anyone wishing to begin receiving their newsletter  
by email, please send me a note to my e-mail  
address (above).

From Jackie Cholewinski

Hi ladies, I'm enclosing a recipe that got  
rave reviews at my last circle meeting.

In a oven safe dish, spread 2 (8 oz.)  
packages of cream cheese. (I use the  
lighter one.)

Top with one jar of Paul Newman's  
peach salsa.

Top that with 8 oz. shredded cheddar  
cheese.

Bake at 350 degrees for about 20 min-  
utes, till cheese melts. Serve with Scoops  
or tortilla chips.

Enjoy!